

# Tabby

**Flexible Retail & Quick Service POS** *mobile, unique, innovative, affordable*



## Tabby Retail

Tabby provides a contemporary platform that is easy to use and maintain, but without the budget strains and complexity of a full-scale POS system. With minimal assistance, merchants can setup their own store database; establish and maintain items, prices, departments, groups and other options. Operation is intuitive; tablet-savvy operators are productive after just minutes of instruction.

## What is Tabby?

Tabby is a WEB Server in a compact standalone device. To enable wireless mobility, simply connect Tabby to a wireless router. Tabby runs on any browser capable device regardless of operating system, including PCs, mobile devices or tablets. Use Tabby to register sales, print receipts, and record payments. Tabby Backoffice provides store management tools, database maintenance, stock entry and management reports.

## Tabby Advantages

- Tabby does not rely on tablet or device resources.
- No application to install – adding or replacing a tablet, mobile device or workstation terminal can be done “out of the box”. Simply open your browser and enter Tabby’s IP address.
- Remote management is inherently ready.
- No Internet is required, but an internet connection may be desired for electronic payment processing, emailed reports or remote access.



# Tabby

**Tabby Retail** Perfect for Any Small Retail Business – Quick Service, Concession or Retail

# Tabby



Ice cream, yogurt, coffee, sandwich and other quick service restaurants.



Food trucks, fair stands, carnivals and mobile concessions.



Landscape, garden and retail where mobility is essential.

## Tabby Configuration



### Tabby SL

Flexible, compact, stand-alone.



### Wireless Router

Use a wireless router (optional) to communicate with Wi-Fi enabled tablets.

## Select Your Preferred Device

Whatever your device preference, Tabby is ready. Many find that a 10" tablet such as the iPad provides the best combination of screen size, mobility and familiarity. Others may prefer a fixed terminal – which may be more cost effective than an iPad and a stand. You choose; you can access Tabby using any device, running any operating system that supports a browser.

## Connectivity

- Connects to up to 8 point of sale devices.
- Tabby's serial ports support up to 4 devices.
- Supports up to 4 printers.
- Each printer can drive up to two cash drawers.

## Select Your POS Peripherals

Peripherals supported include:



Deploy up to four transaction or kitchen printers.



Display orders on the E-Pad kitchen video system.



Connect up to eight cash drawers.



Connect up to two pole displays.



Add a scanner at each POS device.



Datacap payment device.



Verifone VX 805 PIN pad.

## Tabby Features

### Kitchen Printer

Print kitchen requisition tickets at your Tabby printer or optional serial or Ethernet printers. Tickets organize items with condiments and/or prep instructions. You can select or type a custom message to the kitchen.



### Store and Recall

Tabby gives you the flexibility to enter an order and defer payment to a later time. Easy to use for call in orders, line busting or if an inside customer is running a tab. Track guest counts and apply cover charges.

### Scanning

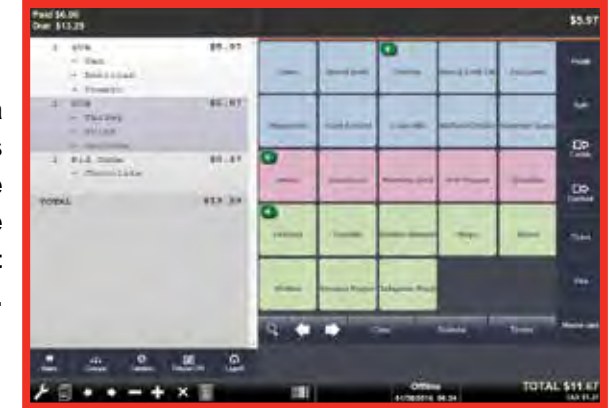
Tabby supports serial scanners connected to a Tabby port or wireless Bluetooth scanners paired with your Bluetooth enabled device. Use the scanner to check out, or to add items or stock in Tabby Backoffice.

### Condiments

Use Tabby's condiment feature to enforce condiment or instruction entry by item. You can display groups of relevant condiments after an item is entered. Enforce entry of one or more condiments and/or enforce selection from more than one group. For example, if a submarine sandwich is entered, the operator can be forced to select a single meat and cheese, and then enter any number of veggies and spreads.

### Highly Configurable Layout

Select a previous item to delete or change condiment selections.



Multiple condiment groups are displayed by color. Plus "+" Indicates selected.

### Electronic Payment Security

Tabby uses the PA-DSS validated Datacap DataTran™ devices to process integrated electronic payments. Credit, debit, gift and EBT payments can be accepted.

### Client Tracking

You can select a specific customer at the time of sale so that you can track sales levels. You can view either revenue or entire receipts.



Deploy up to eight POS devices. Mix and match stationary and mobile devices.

# Tabby



## Reports

Significantly, Tabby doesn't just maintain monthly or yearly reports, like other systems. Instead Tabby archives each daily report in its database. So if you are planning staff for the upcoming holiday weekend, you can go back and look at sales on the same date for previous years. With all reports in the report database, you can select how you want to review sales, review by day, by week, month, quarter, year or for any range of dates you select.

## Data Stored Locally – Not in the Cloud – Accessible Remotely

- Daily X & Z Reports
- Sales Statistics Reports
- Payments Reports
- Payment Statistic Reports
- Group Reports
- Operator Reports
- Item Reports
- Inventory Reports
- Department Reports
- Journal Management – Search, Review, or Reprint Receipts from the Electronic Journal
- Sales Overview Dashboard
- Detailed Sales Charts and Graphs

## Capacities and Features

- 10,000 Items
- 100 Groups
- 80 Tenders
- 40 Discounts
- 8 Operators
- 1,000 Client Accounts
- 80 Tables
- Gift Receipt
- Token Receipt
- Inventory Level Reporting and Stock Shortage Warning
- Prints Receipt Messages and Logos
- Four Price Lists/Levels Available for Each Item
- Log In Security for Tabby Operators and Backoffice
- Flexible, Easy-to-Configure Display Layout
- Export reports to CSV.
- Reports are e-mailable.
- Reports are accessible remotely.



All product and company names are trademarks, service marks or registered trademarks of their respective owners. All product features are subject to change without notice.